

CASIO Japanese Language Learning Tool Operation Guide (E-A10)

Before using this product, be sure to read and observe the separate "Operating Precautions". Be sure to keep all user documentation handy for future reference. This Operation Guide provides you with general information you need to start using your Japanese Language Learning Tool.

- The screen shots and product illustrations shown in this manual may be different from those of the actual product. Also note that some keys and screen indicators are shown in simplified form.

Example: 決定 → 決定
 → Quick Palette [] button

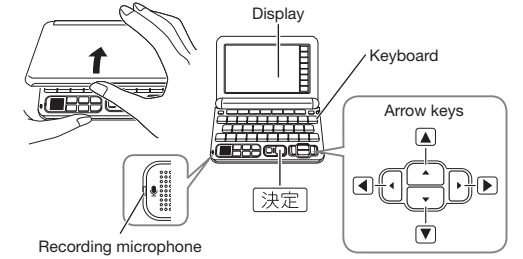
Loading Batteries for the First Time

Load the two AA-size batteries that come with the Japanese Learning Tool before trying to use it.

- Remove the battery cover.**
 - While pressing down on the two locations shown in the illustration, slide the battery cover in the direction indicated by the arrows.
- Load two batteries.**
 - Load each battery with the minus (-) pole facing as shown in the nearby illustration.
 - With the battery on top of the ribbon, press down on the plus (+) end of the battery.
 - Make sure the (+) and (-) ends are facing correctly and that the spring is pressed straight down.

- Replace the battery cover.**
- Remove the stylus from the side of the Japanese Learning Tool and use it to press the RESET button.**
 - Do not use a toothpick, lead pencil, or other object with a breakable tip.

5 Unfold the Japanese Learning Tool.



This causes the 言語設定 (language selection) screen to appear.

- On the 言語設定 (language selection) screen, use ▲ and ▼ to move ● to 英語 (English) and then press 決定 (Enter).**
 - This causes the time setting screen to appear.

- Use the time setting screen to configure time settings.**
 - Use ▲, ▼, ←, and → or the stylus to highlight the setting you want to change, and then use the on-screen number keys to change the setting.
 - Touch [12/24] to toggle between 12-hour and 24-hour format timekeeping.
 - When you are using 12-hour format timekeeping, you need to touch [AM] (a.m.) or [PM] (p.m.) before setting the time.
 - To display the HOME screen without changing time settings, touch [中止] (Cancel).

- Press 決定 (Enter) Key.**
 - Alternatively, you can also touch [保存] (Save) on the time setting screen.
 - This displays the HOME screen.
 - To avoid misplacing the stylus, always be sure to return it to its storage slot in the side of the Japanese Learning Tool whenever you are not using it.
 - You can assign dictionaries you want to the HOME screen so they are available for selection. For more information, see "Assigning Often-used Dictionaries to the HOME Screen" (in the column to the right).

Turning Power On and Off

Power turns on and off automatically whenever you open or close the Japanese Learning Tool panels.

- You also can use the following key operation to turn power on or off.

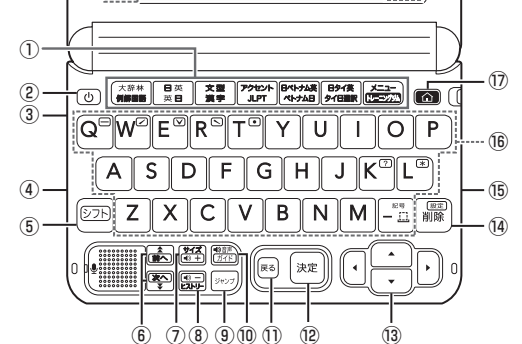
- Press the 決定 (Enter) key to turn on power.**
 - Power also turns on when you press a dictionary/mode key.
- Press 決定 (Enter) again to turn off power.**

General Guide

Display
 You can touch the screen to select an on-screen item, swipe it to scroll to another screen, or input characters by handwriting them on the screen.

Quick Palette icons
 You can quickly perform various operations by touching icons with the stylus. The Quick Palette icons along the left side of the display depend on the function being used.

Quick Palette buttons
 You can quickly perform various operations by touching buttons with the stylus.



- Dictionary/mode keys**
 Toggle between the initial screens of the two dictionaries/modes assigned to each key.
- 決定 (Power) Key**
 Toggles power on and off.
- Earphones Jack (Side)**
 Connect commercially available earphones.
- USB Cable Connector (Side)**
 You can use a specified USB cable to connect to a computer for power.
- シフト (Shift) Key**
 To input (?) or (*) or to use a function marked with the same type of frame as this key, first press [シフト]. Release [シフト] and then press the desired key.
- スクロール (Scroll) Keys**
 - Scroll screen contents up and down.
 - While a definition or explanation screen is displayed, pressing [シフト] and then a scroll key scrolls to the previous or next screen.
- ボリューム (Text Size) (Volume Level (+)) Key**
 - Changes the size of the displayed text.
 - Also press to raise the pronunciation volume level. If no pronunciation is being output, press [シフト] first.
- ボリューム (History) (Volume Level (-)) Key**
 - Accesses history data.
 - Also press to lower pronunciation volume level. If no pronunciation is being output, press [シフト] first.
- ジャンプ (Jump) Key**
 Jumps from a definition or explanation to a related item in the same dictionary, or looks up a term on the displayed screen in a different dictionary.
- オーディオ/ガイド (Audio/Guide) Key**
 - Press to play native speaker or synthesized pronunciation or to compare your pronunciation with native speaker pronunciation.
 - Press after [シフト] to view guide information.
- 戻る (Back) Key**
 Back-steps through previous operations.

- 決定 (Enter) Key**
 Applies input characters or the item selected on the screen.
- Arrow Keys**
 These keys move the selection highlighting or cursor up, down, left, or right.
- 削除 (Setup/Delete) Key**
 - Deletes the character to the right of the current cursor location.
 - Press after [シフト] to display a screen for changing the setup of the Japanese Learning Tool.
- カードスロット (Card Slot) (Slide)**
 Use this slot to view photo data.
- Letter Keys**
 Use these keys to input characters.
- ホーム (HOME) Key**
 Displays the HOME screen.
- 戻る (Back)**
 Performs the same functions as the 決定 (Back) key.
- 決定 (Enter)**
 Performs the same functions as the 決定 (Enter) key.
- ノート (Note)**
 Touch to use the ノート (Note) function. (→ page 2).
- さらに検索 (Search Again)**
 Touch this button when performing split screen search*1, refine/specific word order search *2, or spelling/original form search.*3
- オーディオ (Audio)**
 Performs the same functions as the オーディオ/ガイド (Audio/Guide) key.
- ジャンプ (Jump)**
 Performs the same functions as the ジャンプ (Jump) key.
- トレーニングジム (Japanese Training Gym)**
 Touch to display the initial screen of the Japanese Training Gym.*4
- ホーム (HOME)**
 Performs the same functions as the 決定 (HOME) key.

- While a definition or explanation screen is displayed, you can display a definition or explanation screen from another dictionary in the lower half of the display.
- On a PHRASE (Phrase Search) or EXAMPLE (Example Search) list screen, you can add terms and specify the word order to refine a search.
- Inputting characters for HEADWORD (Headword Search) with a dictionary that has FUZZY SEARCH (Spell Check) and then touching [さらに検索] (Search Again) will display a term whose spellings resemble your input or a term that is thought to be the spelling original form of your input.
- Content to help improve your Japanese ability. You can select a learning plan, which is a combination of recommended content. Or you can select from among Vocabulary/Grammar, Listening, and more to work on a specific area.

Display Items

The following explains the meanings of the different items (indicators, icons, buttons) that appear on the display.

This:	Means this:
	A definition or explanation continues off the top, bottom, left, or right of the screen. Use the arrow keys to scroll the screen.
	There is an explanation for the word where the indicator is located.
	There is a phrase that uses the term you are looking up.
	There is an example that uses the term you are looking up.
	Native speaker pronunciation is available for the contents to the right or below this indicator.
	Synthetic voice reading is available.
	Pronunciations are available for the English term on the screen.
	The language whose pronunciation is applied for pronunciations and readings.
	There is related information for the term you are looking up in the current dictionary.
	Jump function is in use.
	History function is in use.
	Zoom function is in use.
	Guide function is in use.
	Indicates the display method when using Example Search or Phrase Search.

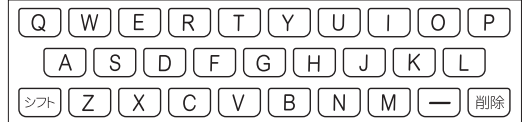
Panel Touch and Text Input Tips

- When performing a display screen touch operation, be sure to support the back of the display with your hand.
- Strong pressure is not required when performing display screen touch operations.
- Avoid applying excessive pressure during touch operations and input. Strong pressure can cause cracking or breaking of LCD panel.
- For stylus input, be sure to use only the stylus that comes with your Japanese Learning Tool.
- When using your finger for input, do not tap with your fingernail.

Keyboard Input

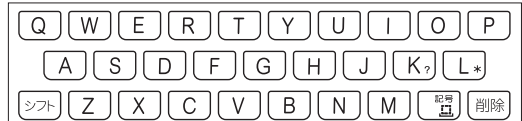
- To input numbers, touch the on-screen number keys.
- For information about Thai input (search), see "Specifying the First Letter of a Thai Term" under "[Pattern 3] : Searching step-by-step through a series of titles" (in the column to the right).

Inputting Japanese Characters



- Use alphabetic characters to input Japanese.
- | To input this: | Type this: |
|----------------|----------------------------|
| いんかん | I N N K A N N |
| さんぽ | S A N N P O or S A M P O |
| きょう | K Y O U |
| らっこ | R A K K O or R A X T U K O |
| えーる | E E R U |

Inputting Alphabetic Characters



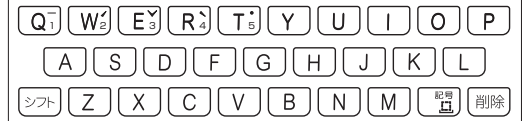
To input this:	Type this:
internet	I N T E R N E T
?	シフト []
*	シフト []

- Input of a question mark (?) and asterisk (*) is not supported for a HOME screen search.
- When entering a noun that is normally accompanied by an article, enter the noun only without the article. To look up "the Beatles" for example, input "beatles".

Inputting Vietnamese

- Input Vietnamese using characters without tone symbols and blank spaces.
 Example: "bác sĩ" → "bacsí"
- Your Japanese Learning Tool does not support input of Vietnamese characters (â, đ, ê, etc.)

Inputting Chinese Characters (Pinyin)



To input this:	Perform this operation:
ming2tian1 (明天)	M I N G 2 T I A N 1
	シフト []

- To input one of the four tone symbols (ˊ, ˋ, ˇ, ˋ), or the neutral tone symbol (ˊ), press [] and [] to select the desired symbol, and then press [決定].
- To input "ü", press [] [].

Inputting with the Japanese Syllabary Keyboard

When the Quick Palette [Kana Key] icon is displayed during text input, touching it displays a Japanese syllabary keyboard, which makes text input easier.

Example: スーパー大辞林 3.0 (Japanese Dictionary)
 Touching the Quick Palette [Kana Key] icon displays a Japanese syllabary keyboard.



- To delete a character, use [] and [] to move the cursor to the left of the character to be deleted, and then touch [Delete].
- To input a small character while the Japanese syllabary screen is displayed, input the desired character and then touch [Small] (Small Letter).
- Katakana and hiragana keyboards are both available. Use [Kata] / [Hira] to toggle between them.
- Touching [X] closes the Japanese syllabary screen.

Handwriting Input

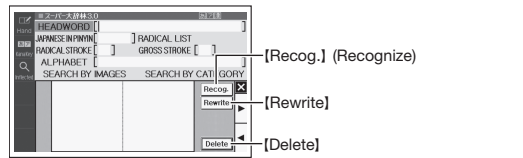
Use the stylus to write the character on the screen.

- Touch the Quick Palette [Hand] (Handwriting) icon to display character input cells.
- Write a character into a cell and then touch [Recog.] (Recognize).

Character Input Mode

The indicators described below appear on the screen to show the current input mode.

Indicator	Supported Input Characters	Indicator	Supported Input Characters
	Hiragana		Simplified Chinese
	Katakana		Alphabetic
	Kanji		

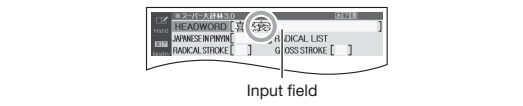


- The number of cells that appear on the screen depends on the type of characters that can be input.

Correcting Character Input

- The example here uses the screen (character input cells) that are displayed after [Hand] (Handwriting) is touched.

Example: If you write 喜怒哀楽 but it is mistakenly recognized as 喜怒哀楽



- Touch the character (衰) in the input field.**
 - This displays up to 10 possible candidates for the character.

- If you find the correct character among the candidates, touch it.**
 - If you do not find the correct character, touch [Rewrite], rewrite the character and then touch [Recog.] (Recognize).
 - Touching [Rewrite] while the character cells are blank (nothing input) will delete the character currently in the input field.

Touch Screen Operations

To select a dictionary

- Touch the Quick Palette [] (HOME) button to display the HOME screen.**
- Touch [MENU].**
- Touch a category.**
 - Touching a category selects it.
 - The currently selected category or dictionary will be indicated by a green cursor (■ or □).

- Touch a dictionary (icon).**
 - This displays the initial screen of the dictionary.

To select a headword or screen item

- Enter characters. On the list that appears, touch the term or screen item you want.**
 - This highlights the term or item.
- Touch the highlighted term or item again.**
 - This displays the definition or explanation in the case of a term, or the next screen in the case of a screen item.

Scrolling the Screen

- If there are pages following the currently displayed page, you can scroll to them by swiping the panel.
- Swiping quickly will scroll at high speed. Touch the panel to stop the scrolling.

Assigning Often-used Dictionaries to the HOME Screen

You can assign up to six often-used dictionaries to the HOME screen for quick and easy recall whenever you need them.

To assign a dictionary to the HOME screen

- Press [] to display the HOME screen.**
- Touch [MENU].**
- Touch and hold the dictionary you want to assign for about one second.**
 - Dictionaries are displayed on the screen in the order they were assigned, from left to right. To change the arrangement of dictionaries, delete the ones currently registered and register them again.

To select a dictionary

- While the HOME screen is displayed, touch the dictionary you assigned to the HOME screen.**

To remove a dictionary

- While the HOME screen is displayed, touch and hold the dictionary you want to remove for about one second.**
- Use ▲ and ▼ to select a dictionary removal option, and then press [決定].**
 - To remove only the selected dictionary, select "Delete the selected content (1)".
 - To remove all dictionaries you assigned, select "Delete all contents".

Launching a Search from the HOME Screen

You can input Japanese, alpha characters, or Chinese to perform a Multi-Dictionary Search from the HOME Screen.

- Press [].**
 - This displays the HOME screen.

- Touch the search method you want to use: JAPANESE, ALPHABET, EXAMPLE, PHRASE, CHINESE.**

- This causes the cursor (I) to appear in the search term input box. As long as nothing is contained in the search term input box, you can touch and select a different search method, if you want.
- Touching [] or [] (Handwriting) displays the handwriting input cells. For information about handwriting input, see "Handwriting Input" (in the column to the left).
- Touching [] (Japanese syllabary keyboard) displays the Japanese syllabary keyboard. For information about Japanese syllabary keyboard input, see "Inputting with the Japanese Syllabary Keyboard" (in the column to the left).

Enter the term you want.

- Terms starting with the characters you have entered appear in a list on the display. In the case of EXAMPLE (Example Search) and PHRASE (Phrase Search), enter the characters you want and then press [決定].
- Each term also includes an indicator showing its dictionary.

Launching a Search from a Dictionary

You can use any one of the four patterns shown below to search for terms and sentences.

[Pattern 1] : Entering the initial characters of the term you want to find

The displayed list of search results changes as you enter characters of the term you want to find. Example: To look up the meaning of "美しい" (beautiful) (スーパー大辞林 3.0 (Japanese Dictionary))

- Use ▲ and ▼ to highlight HEADWORD (Headword Search).**

- Enter the term you want.**

- As you enter each character, the list of terms is updated accordingly.
- When entering a headword, you can use the following wildcard characters.

Character	Represents
?	A single unknown character
*	A series of multiple unknown characters of unknown length

- Use ▲ and ▼ to move the highlighting to a term, and then press [決定].**
 - This displays the definition screen.

[Pattern 2] : Entering all of the terms you want to find

Enter the entire term you want to find and then press [決定].

Example: To find the phrases that use the words "go" and "to" (ウィズダム英和辞典 (English-Japanese Dictionary))

- Use ▲ and ▼ to highlight PHRASE (Phrase Search).**
 - Highlight EXAMPLE (Example Search) to search for an example.

- Enter the term.**
 - When inputting multiple words, separate them with a space. Enter a space using the [] (Space) key.

- Press [決定].**
 - This displays a list of all phrases that contain the terms.

- Use ▲ and ▼ to move the highlighting to a phrase, and then press [決定].**
 - This displays the detailed information screen.

[Pattern 3] : Searching step-by-step through a series of titles

With some dictionaries, you need to perform successive select and execute (by pressing [決定]) operations until you arrive at the information you need.

Example: To look up the counter for rabbits (例解学習国語辞典) (Japanese Dictionary)

After the initial 例解学習国語辞典 (第十版) (Japanese Dictionary) screen appears, perform the following procedure to display the explanation screen: [APPENDIX] → 物 (もの) を数 (かぞ) えることば (Counters of things) → 生 (い) き物 (もの) ・体 (からだ) (Counters of living things) → ウサギ (Rabbits)

Specifying the First Letter of a Thai Term

After displaying the Thai Soft Keyboard, you can input characters to recall terms that begin with them. Example: To look up the meaning of "愛情" (affection) (Portable JP-TH-EN)

- Use ▲ and ▼ to select "THAI", and then press [決定].**
 - This displays the Thai Soft Keyboard.

- Touch the key of the first character of the term you want.**
 - This will display a list of terms that start with the character whose key you touched.

- Repeat the headword select and execute operations until the explanation screen of the term you want to look up is displayed.**
 - When a selection item has a letter next to it, you can press the applicable letter key to select that item.
 - If a selection item has [] next to it, you need to press [シフト] before pressing the applicable letter key.

[Pattern 4] : Narrowing down the search using multiple conditions

With this type of search, you can input multiple keywords, terms, or other conditions. Example: To look up the kanji 志 in 新漢語林 (Japanese Kanji Dictionary)

- First enter 心 to specify the radical of 志, and then specify 7 for the total number of strokes. This information is used to look up the character.

1 Use ▲, ▼, ◀ and ▶ to highlight RADICAL STROKE.

2 In the RADICAL STROKE column, enter 4 for the number of strokes in the radical 心.

- Use the number keys that appear on the screen to input a number.

3 Press [決定]. This displays a list of radicals that satisfy the radical conditions.

4 Use ▲, ▼, ◀ and ▶ to highlight 心, and then press [決定].

- If a selection item has a letter at the beginning, you can press the corresponding letter key to execute the selection directly. In case of the above, for example, you could simply press [A].
- If a radical candidate has 心 next to it, you need to press [シフト] before pressing applicable letter key.
- This displays the selected radical (心 in this case) for RADICAL STROKE and highlights GROSS STROKE.

5 Enter 7 for the total number strokes in the character 志, and then press [決定]. This displays a list of characters that satisfy the conditions.

6 Use ▲, ▼, ◀ and ▶ to highlight 志, and then press [決定]. This displays an explanation of the term.

Other Searches

Jump Search

You can use jump search to jump to another location in the same dictionary or to another dictionary.

To jump within the same dictionary

- When search results show items with a jump indicator (⇨), press [ジャンプ].
 - JUMP appears and the first word that is the jump target is highlighted.
- The highlighted jump range is one character in the case of Japanese and Chinese characters, and one word in the case of English.

2 Use the arrow keys to move the highlighting to an item to the right of a jump indicator (⇨), and then press [決定] to jump.

- Instead of the above procedure, you also can perform the jump by touching the term to the right of the jump indicator (⇨).
- For some dictionaries, only red text is displayed without (⇨).

3 To jump to another dictionary Example: To look up “話” from the “tale” definition screen by jumping from ウィズダム英和辞典 (English-Japanese Dictionary) to スーパー大辞林 3.0 (Japanese Dictionary)

- While the results of a search are displayed, press [ジャンプ].
- Use the arrow keys to move the highlighting to the term you want to look up, and then touch the Quick Palette [Select] icon. This displays a dictionary menu screen.
- Use ▲ and ▼ to highlight a dictionary, and then press [決定]. This displays a list of candidates.

- Use ▲ and ▼ to move the highlighting to the term you want, and then press [決定].
 - After pressing [シフト] in step 1, tapping a single character or term or dragging the stylus across multiple characters or terms will search for the headwords that match the highlighted character(s) or word(s). If you highlight multiple English words for an Example Search or Phrase Search jump, only the first word you highlight will be searched for.
 - If [⇨] or an English term is shown on the jump destination screen, you can play native speaker pronunciation. For details, see “Native Speaker Pronunciation” (in the column to the right).

Displaying Detailed Information

Use the operations described here to view detailed explanations and other information about looked up words and terms.

Viewing Phrases

If [PHR] in the upper right corner of the screen, it means that there is an idiom available for the term you are viewing.

- Touch the symbol in the upper right corner of the screen. This displays a list of applicable candidates.
- Touch the item you want to view to highlight it and then press [決定]. This displays the applicable details.

Viewing Examples and Explanations

If [EX] or [COM] is on the display, it means that example, illustration, explanation, or other information is available.

- Touch an on-screen icon. This displays the applicable details.

Using the Exercise Book (Workbook)

The Exercise Book lets you use handwritten text to further your language study. It lets you do many of the same things you can do with the paper version of a dictionary, such as highlighting important passages with a marker (Marker Vocabulary List), affix comment tags (Color Headword Memo), and more.

- The Exercise Book can be accessed from the HOME screen Tools menu item.

Creating a Vocabulary List by Marking with a Marker

Vocabulary List lets you save headwords you want to remember.

- You can save terms, examples, or idioms as headwords.
- You can save items while Quick Palette [Marker] icon or [Vocab.] (Vocabulary List) icon is displayed.

Handwriting a Notebook

You can save screens that contain handwritten text to a built-in notebook or dictionary definition screen.

- Touching Quick Palette [ノート] (Note) button displays the menu screen.

Affixing a Tag to a Headword

You can affix a handwritten tag to the definition or explanation screen of a headword produced by a search operation.

- Tags can be affixed to a headword that is a term, example sentence, idiom, etc.
- Tags can be affixed while the Quick Palette [MEMO] screen is displayed. After a tag is affixed, it can be viewed by touching Quick Palette [MEMO] icon.

Creating a Memorizing Card (Memorization Card)

While viewing a dictionary definition or explanation screen, you can create a handwritten memorizing card and use it for memorizing terms and expressions.

- You can save combinations of terms and pronunciations for Japanese or English.
- You can also use it for handwritten dictation testing.
- Touching Quick Palette [M. Card] (Memorizing Card) icon displays the memorizing card.

Pronunciation

You can use your Japanese Learning Tool to listen to readings (using native speaker pronunciations or synthesized voices) of terms and sentences you look up, and to record your own reading and compare it with built-in readings by a native speaker.

- The pronunciation sounds from a built-in speaker.

Native Speaker Pronunciation

When [⇨] or an English term is on the display, it means that native speaker pronunciation is available.

- Press [Native Voice].
- On the Quick Palette, touch the [Listen] icon.
 - If [⇨] was on the display when you performed the above step, it will become highlighted ([▶]). If [⇨] was not displayed, an English term for which native speaker pronunciation is available will become highlighted.
 - You can specify the number of repeats by pressing the [Repeat] icon on the Quick Palette and then selecting the number of repeats you want: 1 (once), 3 (three times), 5 (five times).
- Press [決定].
 - This will play the pronunciation of the term or example sentence next to or under [⇨], or of the currently highlighted English term.
 - If there are multiple [⇨] indicators or English terms, use the arrow keys to highlight the one you want and then press [決定].
- To exit pronunciation, press [戻る].
 - You also can play a pronunciation by touching [⇨].
 - Note the following precautions concerning English terms.
 - Proper pronunciation will not be produced for language other than English.
 - The pronunciation produced by your Japanese Learning Tool may not be correct if there are multiple pronunciations for a term.

Recording Your Reading to Compare with Native Speaker Reading

While [⇨] or an English term is displayed, you can compare your reading with a native speaker reading.

Using the Recording microphone

You should be about 20 to 30 cm away from the microphone when recording. Clear recording may not be possible if you are too close or if you are in a noisy area.

- Any of the following can cause digital noise while recording: nearby electronic devices, fluorescent lighting, cell phones, etc., moving away from the microphone.
- Do not allow the microphone to be exposed to strong wind or water.
- Facing the microphone, enunciate clearly.
- After you are finished, immediately press [決定] to end recording.

- Press [Native Voice].
- On the Quick Palette, touch the [Compare] icon.
 - This causes [⇨] or an English term to become highlighted.
 - If there are multiple [⇨] indicators or available English terms on the display, use the arrow keys to move the highlighting to location of the indicator or term you want to use for pronunciation comparison.
- Press [決定] to play the native speaker reading of the term.

4 After playback is complete and “Recording” appears on the screen, read the same term or sentence into the microphone.

- After you finish recording, press [決定].
- Recording time is two minutes. Recording stops automatically after two minutes.

- Use [▶] and [◀] to highlight “Compare with Native Voice”, and then press [決定].
 - The native speaker reading and the reading you recorded will play back in succession.
 - To stop playback, press [戻る].
 - If you want to play them back again, repeat step 5 of this procedure.
 - To re-record pronunciation, select “Speak again” and perform the procedure from step 3.
- Use [▶] and [◀] to highlight “Do not compare”, and then press [決定].
 - Exiting a comparison operation will automatically delete the reading you recorded.
 - Pressing [戻る] returns to the definition screen.

Synthesized Voice Readings

Synthesized voice readings of terms and examples are available in six languages: English, Spanish, German, French, Italian, and Japanese (headwords only for Japanese).

- Some dictionaries/modes do not support synthetic voice readings.

- While a definition or explanation screen is displayed, press [Native Voice].
- On the Quick Palette, touch the [Listen TTS] icon.
 - The first term or example on the screen for which a pronunciation is available will be highlighted.
- Use ▲ and ▼ to highlight the term or example whose pronunciation you want to hear.
 - You can also highlight a term or example by touching it.
- Press [決定].
 - This will play the pronunciation of the term or example.
- To exit pronunciation, press [戻る].

Using Speech Training

The Speech Training feature is a great way to practice for a speech contest, etc. You can select a time limit, and record and play back speeches accordingly.

- Available time limit settings are from one to five minutes, settable in one-minute units.
- You can have up to five speeches stored in memory.
- Speech Training can be accessed from the HOME screen Tools menu item.
- For information about recording precautions, see “Using the Recording microphone” (in the column to the left).

To record a speech

- Display the HOME screen. With the Tools menu item, select “Speech Training” and then press [決定]. This displays the Speech Training screen.
- Use [▶] and [◀] to select “Record”.
- Use ▲ and ▼ to select the time limit you want, and then press [決定].
- Select [決定] or touch [Native Voice].
 - This displays the message “Recording”. Facing the Japanese Language Tool’s microphone, recite your speech.
 - After finishing the speech, press [決定] or touch [Native Voice].
 - You can playback or re-record a speech without saving it.
 - To save a recording speech and finish recording, select “Quit after saving” and then press [決定]. Next, select a storage location and then press [決定].
 - To exit recording without saving, select “Quit” and then press [決定].

To play back a speech

- Display the Speech Training screen and then use [▶] and [◀] to select “Play”.
- Use ▲ and ▼ to select the speech you want to play back, and then press [決定].
 - This starts playback of the speech.
 - To delete a speech, select it and then press [Delete]. Next, select the speech delete option, and then press [決定].

Configuring Settings

There are two ways to configure settings.

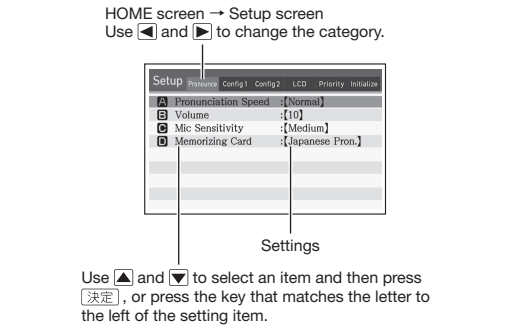
- While the HOME screen is displayed, touch “Setup” (HOME Settings)
- While a menu screen or dictionary screen is displayed, press and release [シフト], and then press [Settings] (Dictionary Settings)

HOME setting and dictionary setting items and procedures are different from each other.

Setting Items

- You can configure the setting items described below.
- You can return settings to their initial defaults if necessary. For information about how to do this, see “Initialize” (in the column to the right).
- Start from the HOME screen or menu screen to configure Language Settings and Common Preview Settings.

- Meanings of setting item marks
 - H: Item can be configured during HOME setting procedure only.
 - S: Item can be configured during dictionary setting procedure only.



- In some cases, the same setting has a different name in the HOME settings and the dictionary settings. The tables below show dictionary setting item names.

Item	Description
Pronunciation Speed	Specifies the speed of the native speaker and synthesized voice readings. <ul style="list-style-type: none">Approximate speeds (Normal = 100%): 130%, 120%, 100%, 85%, 75%
Pronunciation Language Settings	Specifies one of six languages for the displayed dictionary, or disables pronunciation.
Volume	Use [Volume] and [Volume] to adjust the volume (16 levels: 0 to 15). <ul style="list-style-type: none">A setting of 0 mutes output.
Microphone Sensitivity Setting	Specifies one of three input levels for the microphone to suit voice loudness and/or the recording environment. <ul style="list-style-type: none">As you face the microphone and speak, select the input level at which a green bar is displayed. Finally, press [決定].
Memorizing Card Pron. Setting	Specifies the language (English Pron. or Japanese Pron.) of a pronunciation reading to be registered to a memorization card.

Item	Description
Key Tone	Enables or disables the key input tone.
Auto Power Off	Specifies the Auto Power Off trigger time.
HW Recog. Settings	Specifies the handwriting recognition method.
Language Settings	Selects the language used for screen messages, titles, icons, etc.
Preview Setting	Specifies the display position of the list screen preview.
Layout Setting	Specifies the display layout of detail screens (definition or explanation screens). <ul style="list-style-type: none">Only the screen types that can be displayed by the dictionary whose settings you are configuring will be shown.
User Name	For changing the user name displayed on the HOME screen, menu screen, and OFF screen.
HOME Wallpaper	For changing the wallpaper of the HOME screen.
Date/Time	For details about this item, see the steps starting from step 7 under “Loading Batteries for the First Time” (→ page 1).
Common Preview Set.	These items specify the display position of the all dictionary history, idiom search, and example sentence search screen previews. <ul style="list-style-type: none">Preview (All History)Preview (Phrase)Preview (Example)

Item	Description
Brightness Setting	Specifies display brightness (1/5 to 5/5).
Illumination Duration Setting	Specifies how long the display remains illuminated (30 seconds, 1 minute, 3 minutes). <ul style="list-style-type: none">Specifies the time of non-used before the display dims.
LCD Panel Control	Calibrates the stylus with the screen. <ul style="list-style-type: none">Calibration is necessary when the location where you touch or write is different from the resulting location on the display.To calibrate, use the stylus to touch the center of each of the crosses that appear in the four corners of the display. The calibration screen will disappear automatically after you touch all four crosses.

Priority Settings You can use this setting to specify which dictionary’s (mode’s) example sentences or idioms should be given priority when performing a HOME screen “EXAMPLE” or “PHRASE”, or a “Japanese Example” of a “Other Searches”.